

Graphing Rational Functions - $f(x) = \frac{1}{x}$

Graphing Rational Functions - $f(x) = \frac{1}{x}$

► We defined a Rational Function as:

$$f(x) = \frac{P(x)}{D(x)}$$

Graphing Rational Functions - $f(x) = \frac{1}{x}$

► We defined a Rational Function as:

$$f(x) = \frac{P(x)}{D(x)}$$

We saw that these functions are undefined for x so $D(x) = 0$

Graphing Rational Functions - $f(x) = \frac{1}{x}$

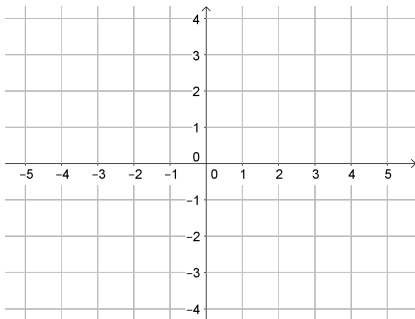
▶ We defined a Rational Function as:

$$f(x) = \frac{P(x)}{D(x)}$$

We saw that these functions are undefined for x so $D(x) = 0$

Now we will graph our easiest Rational Function:

$$f(x) = \frac{1}{x}$$



Graphing Rational Functions - $f(x) = \frac{1}{x}$

▶ We defined a Rational Function as:

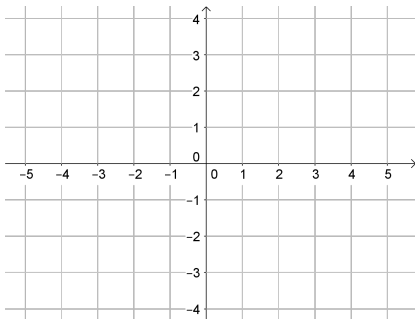
$$f(x) = \frac{P(x)}{D(x)}$$

We saw that these functions are undefined for x so $D(x) = 0$

Now we will graph our easiest Rational Function:

$$f(x) = \frac{1}{x}$$

To see the whole graph, let's start with some points.



Graphing Rational Functions - $f(x) = \frac{1}{x}$

▶ We defined a Rational Function as:

$$f(x) = \frac{P(x)}{D(x)}$$

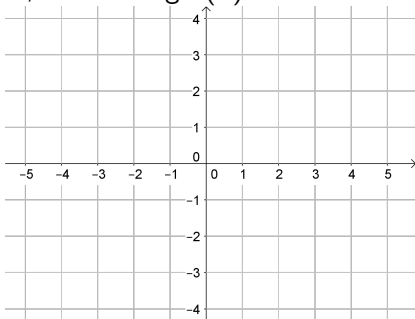
We saw that these functions are undefined for x so $D(x) = 0$

Now we will graph our easiest Rational Function:

$$f(x) = \frac{1}{x}$$

To see the whole graph, let's start with some points.

We can find points by picking x -values, and finding $f(x)$



Graphing Rational Functions - $f(x) = \frac{1}{x}$

▶ We defined a Rational Function as:

$$f(x) = \frac{P(x)}{D(x)}$$

We saw that these functions are undefined for x so $D(x) = 0$

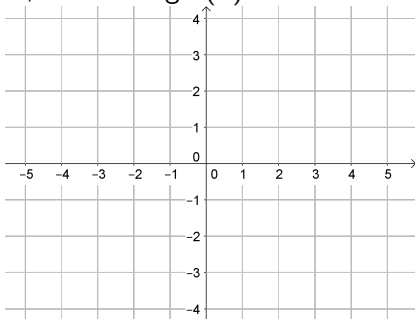
Now we will graph our easiest Rational Function:

$$f(x) = \frac{1}{x}$$

To see the whole graph, let's start with some points.

We can find points by picking x -values, and finding $f(x)$

If $x = 1$



Graphing Rational Functions - $f(x) = \frac{1}{x}$

► We defined a Rational Function as:

$$f(x) = \frac{P(x)}{D(x)}$$

We saw that these functions are undefined for x so $D(x) = 0$

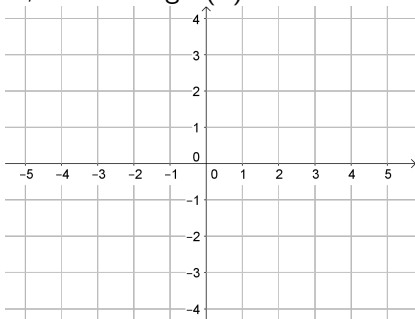
Now we will graph our easiest Rational Function:

$$f(x) = \frac{1}{x}$$

To see the whole graph, let's start with some points.

We can find points by picking x -values, and finding $f(x)$

If $x = 1 \rightarrow f(1) = \frac{1}{1}$



Graphing Rational Functions - $f(x) = \frac{1}{x}$

▶ We defined a Rational Function as:

$$f(x) = \frac{P(x)}{D(x)}$$

We saw that these functions are undefined for x so $D(x) = 0$

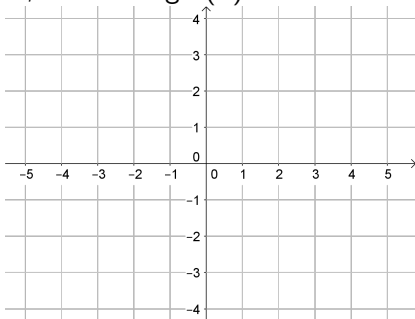
Now we will graph our easiest Rational Function:

$$f(x) = \frac{1}{x}$$

To see the whole graph, let's start with some points.

We can find points by picking x -values, and finding $f(x)$

If $x = 1 \rightarrow f(1) = \frac{1}{1} = 1$



Graphing Rational Functions - $f(x) = \frac{1}{x}$

▶ We defined a Rational Function as:

$$f(x) = \frac{P(x)}{D(x)}$$

We saw that these functions are undefined for x so $D(x) = 0$

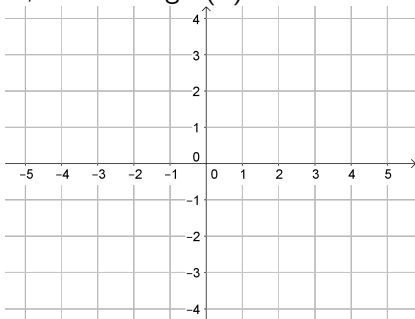
Now we will graph our easiest Rational Function:

$$f(x) = \frac{1}{x}$$

To see the whole graph, let's start with some points.

We can find points by picking x -values, and finding $f(x)$

If $x = 1 \rightarrow f(1) = \frac{1}{1} = 1 \rightarrow (1, 1)$



Graphing Rational Functions - $f(x) = \frac{1}{x}$

▶ We defined a Rational Function as:

$$f(x) = \frac{P(x)}{D(x)}$$

We saw that these functions are undefined for x so $D(x) = 0$

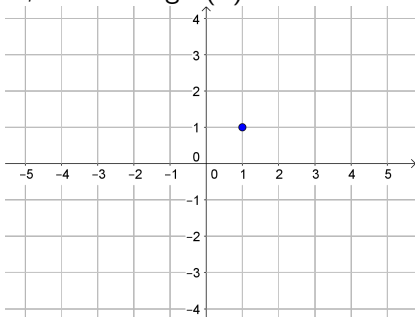
Now we will graph our easiest Rational Function:

$$f(x) = \frac{1}{x}$$

To see the whole graph, let's start with some points.

We can find points by picking x -values, and finding $f(x)$

If $x = 1 \rightarrow f(1) = \frac{1}{1} = 1 \rightarrow (1, 1)$



Graphing Rational Functions - $f(x) = \frac{1}{x}$

▶ We defined a Rational Function as:

$$f(x) = \frac{P(x)}{D(x)}$$

We saw that these functions are undefined for x so $D(x) = 0$

Now we will graph our easiest Rational Function:

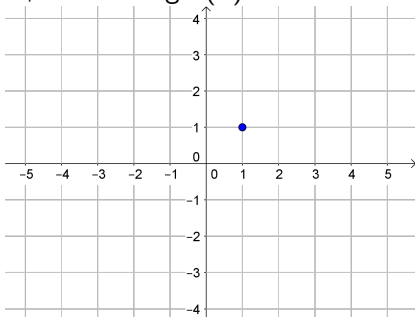
$$f(x) = \frac{1}{x}$$

To see the whole graph, let's start with some points.

We can find points by picking x -values, and finding $f(x)$

If $x = 1 \rightarrow f(1) = \frac{1}{1} = 1 \rightarrow (1, 1)$

If $x = 2$



Graphing Rational Functions - $f(x) = \frac{1}{x}$

▶ We defined a Rational Function as:

$$f(x) = \frac{P(x)}{D(x)}$$

We saw that these functions are undefined for x so $D(x) = 0$

Now we will graph our easiest Rational Function:

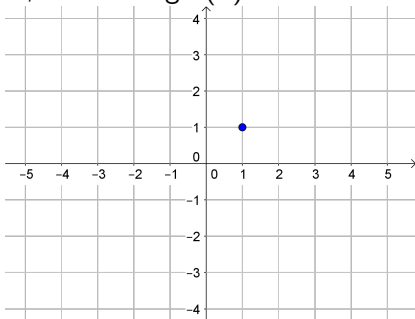
$$f(x) = \frac{1}{x}$$

To see the whole graph, let's start with some points.

We can find points by picking x -values, and finding $f(x)$

$$\text{If } x = 1 \rightarrow f(1) = \frac{1}{1} = 1 \rightarrow (1, 1)$$

$$\text{If } x = 2 \rightarrow f(2) = \frac{1}{2}$$



Graphing Rational Functions - $f(x) = \frac{1}{x}$

▶ We defined a Rational Function as:

$$f(x) = \frac{P(x)}{D(x)}$$

We saw that these functions are undefined for x so $D(x) = 0$

Now we will graph our easiest Rational Function:

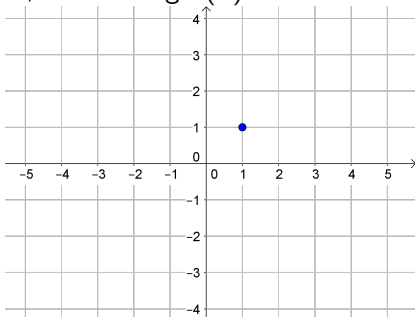
$$f(x) = \frac{1}{x}$$

To see the whole graph, let's start with some points.

We can find points by picking x -values, and finding $f(x)$

$$\text{If } x = 1 \rightarrow f(1) = \frac{1}{1} = 1 \rightarrow (1, 1)$$

$$\text{If } x = 2 \rightarrow f(2) = \frac{1}{2} = \frac{1}{2}$$



Graphing Rational Functions - $f(x) = \frac{1}{x}$

▶ We defined a Rational Function as:

$$f(x) = \frac{P(x)}{D(x)}$$

We saw that these functions are undefined for x so $D(x) = 0$

Now we will graph our easiest Rational Function:

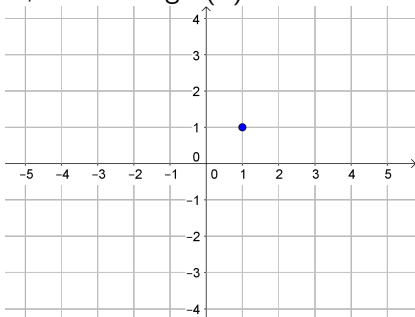
$$f(x) = \frac{1}{x}$$

To see the whole graph, let's start with some points.

We can find points by picking x -values, and finding $f(x)$

$$\text{If } x = 1 \rightarrow f(1) = \frac{1}{1} = 1 \rightarrow (1, 1)$$

$$\text{If } x = 2 \rightarrow f(2) = \frac{1}{2} = \frac{1}{2} \rightarrow \left(2, \frac{1}{2}\right)$$



Graphing Rational Functions - $f(x) = \frac{1}{x}$

▶ We defined a Rational Function as:

$$f(x) = \frac{P(x)}{D(x)}$$

We saw that these functions are undefined for x so $D(x) = 0$

Now we will graph our easiest Rational Function:

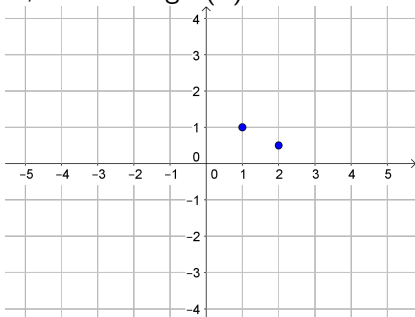
$$f(x) = \frac{1}{x}$$

To see the whole graph, let's start with some points.

We can find points by picking x -values, and finding $f(x)$

$$\text{If } x = 1 \rightarrow f(1) = \frac{1}{1} = 1 \rightarrow (1, 1)$$

$$\text{If } x = 2 \rightarrow f(2) = \frac{1}{2} = \frac{1}{2} \rightarrow \left(2, \frac{1}{2}\right)$$



Graphing Rational Functions - $f(x) = \frac{1}{x}$

▶ We defined a Rational Function as:

$$f(x) = \frac{P(x)}{D(x)}$$

We saw that these functions are undefined for x so $D(x) = 0$

Now we will graph our easiest Rational Function:

$$f(x) = \frac{1}{x}$$

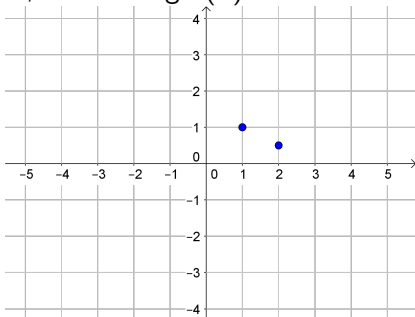
To see the whole graph, let's start with some points.

We can find points by picking x -values, and finding $f(x)$

$$\text{If } x = 1 \rightarrow f(1) = \frac{1}{1} = 1 \rightarrow (1, 1)$$

$$\text{If } x = 2 \rightarrow f(2) = \frac{1}{2} = \frac{1}{2} \rightarrow \left(2, \frac{1}{2}\right)$$

$$\text{If } x = \frac{1}{2}$$



Graphing Rational Functions - $f(x) = \frac{1}{x}$

▶ We defined a Rational Function as:

$$f(x) = \frac{P(x)}{D(x)}$$

We saw that these functions are undefined for x so $D(x) = 0$

Now we will graph our easiest Rational Function:

$$f(x) = \frac{1}{x}$$

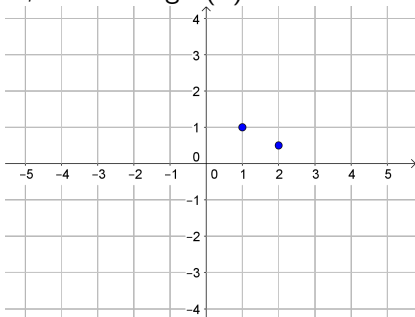
To see the whole graph, let's start with some points.

We can find points by picking x -values, and finding $f(x)$

$$\text{If } x = 1 \rightarrow f(1) = \frac{1}{1} = 1 \rightarrow (1, 1)$$

$$\text{If } x = 2 \rightarrow f(2) = \frac{1}{2} = \frac{1}{2} \rightarrow \left(2, \frac{1}{2}\right)$$

$$\text{If } x = \frac{1}{2} \rightarrow f\left(\frac{1}{2}\right) = \frac{1}{\frac{1}{2}}$$



Graphing Rational Functions - $f(x) = \frac{1}{x}$

▶ We defined a Rational Function as:

$$f(x) = \frac{P(x)}{D(x)}$$

We saw that these functions are undefined for x so $D(x) = 0$

Now we will graph our easiest Rational Function:

$$f(x) = \frac{1}{x}$$

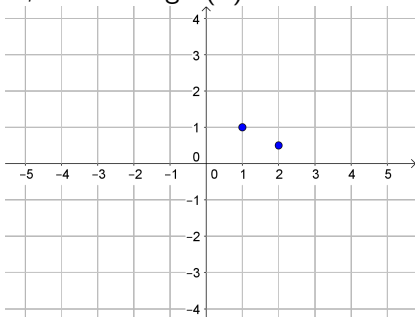
To see the whole graph, let's start with some points.

We can find points by picking x -values, and finding $f(x)$

$$\text{If } x = 1 \rightarrow f(1) = \frac{1}{1} = 1 \rightarrow (1, 1)$$

$$\text{If } x = 2 \rightarrow f(2) = \frac{1}{2} = \frac{1}{2} \rightarrow \left(2, \frac{1}{2}\right)$$

$$\text{If } x = \frac{1}{2} \rightarrow f\left(\frac{1}{2}\right) = \frac{1}{\frac{1}{2}} = 2$$



Graphing Rational Functions - $f(x) = \frac{1}{x}$

▶ We defined a Rational Function as:

$$f(x) = \frac{P(x)}{D(x)}$$

We saw that these functions are undefined for x so $D(x) = 0$

Now we will graph our easiest Rational Function:

$$f(x) = \frac{1}{x}$$

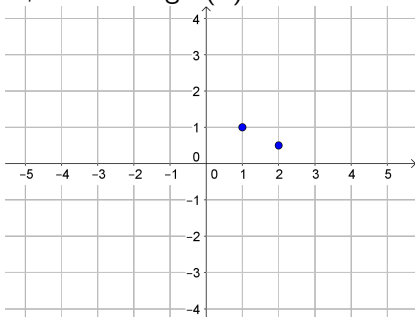
To see the whole graph, let's start with some points.

We can find points by picking x -values, and finding $f(x)$

$$\text{If } x = 1 \rightarrow f(1) = \frac{1}{1} = 1 \rightarrow (1, 1)$$

$$\text{If } x = 2 \rightarrow f(2) = \frac{1}{2} = \frac{1}{2} \rightarrow \left(2, \frac{1}{2}\right)$$

$$\text{If } x = \frac{1}{2} \rightarrow f\left(\frac{1}{2}\right) = \frac{1}{\frac{1}{2}} = 2 \rightarrow \left(\frac{1}{2}, 2\right)$$



Graphing Rational Functions - $f(x) = \frac{1}{x}$

► We defined a Rational Function as:

$$f(x) = \frac{P(x)}{D(x)}$$

We saw that these functions are undefined for x so $D(x) = 0$

Now we will graph our easiest Rational Function:

$$f(x) = \frac{1}{x}$$

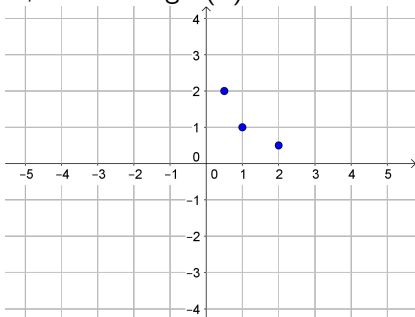
To see the whole graph, let's start with some points.

We can find points by picking x -values, and finding $f(x)$

$$\text{If } x = 1 \rightarrow f(1) = \frac{1}{1} = 1 \rightarrow (1, 1)$$

$$\text{If } x = 2 \rightarrow f(2) = \frac{1}{2} = \frac{1}{2} \rightarrow \left(2, \frac{1}{2}\right)$$

$$\text{If } x = \frac{1}{2} \rightarrow f\left(\frac{1}{2}\right) = \frac{1}{\frac{1}{2}} = 2 \rightarrow \left(\frac{1}{2}, 2\right)$$



Graphing Rational Functions - $f(x) = \frac{1}{x}$

▶ We defined a Rational Function as:

$$f(x) = \frac{P(x)}{D(x)}$$

We saw that these functions are undefined for x so $D(x) = 0$

Now we will graph our easiest Rational Function:

$$f(x) = \frac{1}{x}$$

To see the whole graph, let's start with some points.

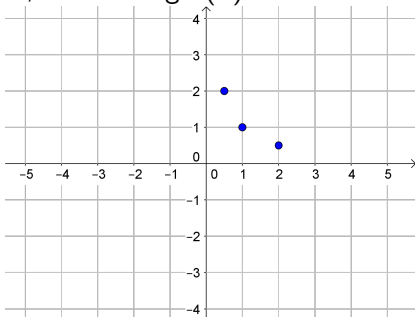
We can find points by picking x -values, and finding $f(x)$

$$\text{If } x = 1 \rightarrow f(1) = \frac{1}{1} = 1 \rightarrow (1, 1)$$

$$\text{If } x = 2 \rightarrow f(2) = \frac{1}{2} = \frac{1}{2} \rightarrow \left(2, \frac{1}{2}\right)$$

$$\text{If } x = \frac{1}{2} \rightarrow f\left(\frac{1}{2}\right) = \frac{1}{\frac{1}{2}} = 2 \rightarrow \left(\frac{1}{2}, 2\right)$$

$$\text{If } x = \frac{1}{4}$$



Graphing Rational Functions - $f(x) = \frac{1}{x}$

► We defined a Rational Function as:

$$f(x) = \frac{P(x)}{D(x)}$$

We saw that these functions are undefined for x so $D(x) = 0$

Now we will graph our easiest Rational Function:

$$f(x) = \frac{1}{x}$$

To see the whole graph, let's start with some points.

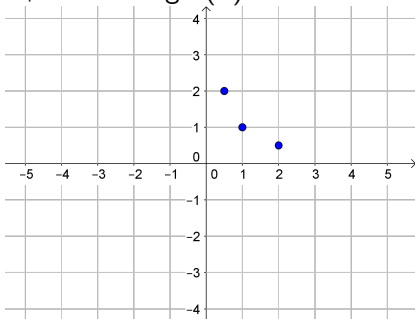
We can find points by picking x -values, and finding $f(x)$

$$\text{If } x = 1 \rightarrow f(1) = \frac{1}{1} = 1 \rightarrow (1, 1)$$

$$\text{If } x = 2 \rightarrow f(2) = \frac{1}{2} = \frac{1}{2} \rightarrow \left(2, \frac{1}{2}\right)$$

$$\text{If } x = \frac{1}{2} \rightarrow f\left(\frac{1}{2}\right) = \frac{1}{\frac{1}{2}} = 2 \rightarrow \left(\frac{1}{2}, 2\right)$$

$$\text{If } x = \frac{1}{4} \rightarrow f\left(\frac{1}{4}\right) = \frac{1}{\frac{1}{4}}$$



Graphing Rational Functions - $f(x) = \frac{1}{x}$

▶ We defined a Rational Function as:

$$f(x) = \frac{P(x)}{D(x)}$$

We saw that these functions are undefined for x so $D(x) = 0$

Now we will graph our easiest Rational Function:

$$f(x) = \frac{1}{x}$$

To see the whole graph, let's start with some points.

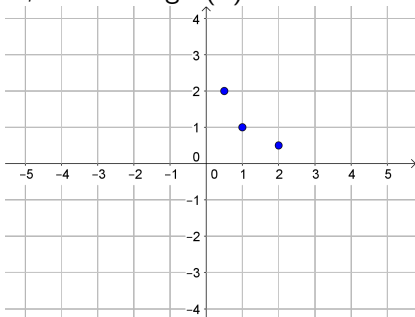
We can find points by picking x -values, and finding $f(x)$

$$\text{If } x = 1 \rightarrow f(1) = \frac{1}{1} = 1 \rightarrow (1, 1)$$

$$\text{If } x = 2 \rightarrow f(2) = \frac{1}{2} = \frac{1}{2} \rightarrow \left(2, \frac{1}{2}\right)$$

$$\text{If } x = \frac{1}{2} \rightarrow f\left(\frac{1}{2}\right) = \frac{1}{\frac{1}{2}} = 2 \rightarrow \left(\frac{1}{2}, 2\right)$$

$$\text{If } x = \frac{1}{4} \rightarrow f\left(\frac{1}{4}\right) = \frac{1}{\frac{1}{4}} = 4$$



Graphing Rational Functions - $f(x) = \frac{1}{x}$

► We defined a Rational Function as:

$$f(x) = \frac{P(x)}{D(x)}$$

We saw that these functions are undefined for x so $D(x) = 0$

Now we will graph our easiest Rational Function:

$$f(x) = \frac{1}{x}$$

To see the whole graph, let's start with some points.

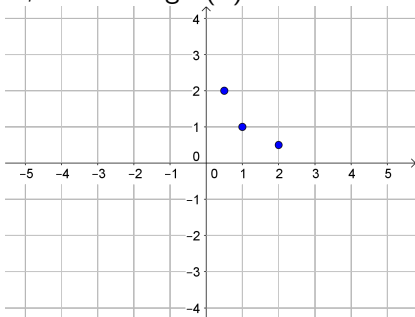
We can find points by picking x -values, and finding $f(x)$

$$\text{If } x = 1 \rightarrow f(1) = \frac{1}{1} = 1 \rightarrow (1, 1)$$

$$\text{If } x = 2 \rightarrow f(2) = \frac{1}{2} = \frac{1}{2} \rightarrow \left(2, \frac{1}{2}\right)$$

$$\text{If } x = \frac{1}{2} \rightarrow f\left(\frac{1}{2}\right) = \frac{1}{\frac{1}{2}} = 2 \rightarrow \left(\frac{1}{2}, 2\right)$$

$$\text{If } x = \frac{1}{4} \rightarrow f\left(\frac{1}{4}\right) = \frac{1}{\frac{1}{4}} = 4 \rightarrow \left(\frac{1}{4}, 4\right)$$



Graphing Rational Functions - $f(x) = \frac{1}{x}$

► We defined a Rational Function as:

$$f(x) = \frac{P(x)}{D(x)}$$

We saw that these functions are undefined for x so $D(x) = 0$

Now we will graph our easiest Rational Function:

$$f(x) = \frac{1}{x}$$

To see the whole graph, let's start with some points.

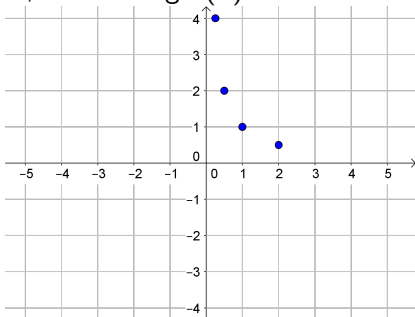
We can find points by picking x -values, and finding $f(x)$

$$\text{If } x = 1 \rightarrow f(1) = \frac{1}{1} = 1 \rightarrow (1, 1)$$

$$\text{If } x = 2 \rightarrow f(2) = \frac{1}{2} = \frac{1}{2} \rightarrow \left(2, \frac{1}{2}\right)$$

$$\text{If } x = \frac{1}{2} \rightarrow f\left(\frac{1}{2}\right) = \frac{1}{\frac{1}{2}} = 2 \rightarrow \left(\frac{1}{2}, 2\right)$$

$$\text{If } x = \frac{1}{4} \rightarrow f\left(\frac{1}{4}\right) = \frac{1}{\frac{1}{4}} = 4 \rightarrow \left(\frac{1}{4}, 4\right)$$



Graphing Rational Functions - $f(x) = \frac{1}{x}$

► We defined a Rational Function as:

$$f(x) = \frac{P(x)}{D(x)}$$

We saw that these functions are undefined for x so $D(x) = 0$

Now we will graph our easiest Rational Function:

$$f(x) = \frac{1}{x}$$

To see the whole graph, let's start with some points.

We can find points by picking x -values, and finding $f(x)$

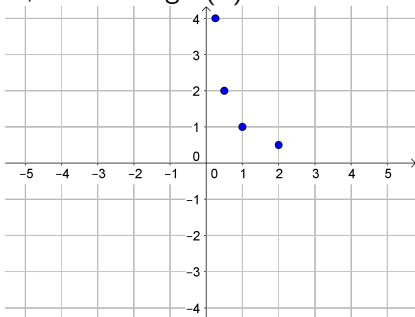
$$\text{If } x = 1 \rightarrow f(1) = \frac{1}{1} = 1 \rightarrow (1, 1)$$

$$\text{If } x = 2 \rightarrow f(2) = \frac{1}{2} = \frac{1}{2} \rightarrow \left(2, \frac{1}{2}\right)$$

$$\text{If } x = \frac{1}{2} \rightarrow f\left(\frac{1}{2}\right) = \frac{1}{\frac{1}{2}} = 2 \rightarrow \left(\frac{1}{2}, 2\right)$$

$$\text{If } x = \frac{1}{4} \rightarrow f\left(\frac{1}{4}\right) = \frac{1}{\frac{1}{4}} = 4 \rightarrow \left(\frac{1}{4}, 4\right)$$

$$\text{If } x \rightarrow 0 \text{ then } f(x) = \frac{1}{x} \text{ gets bigger}$$



Graphing Rational Functions - $f(x) = \frac{1}{x}$

► We defined a Rational Function as:

$$f(x) = \frac{P(x)}{D(x)}$$

We saw that these functions are undefined for x so $D(x) = 0$

Now we will graph our easiest Rational Function:

$$f(x) = \frac{1}{x}$$

To see the whole graph, let's start with some points.

We can find points by picking x -values, and finding $f(x)$

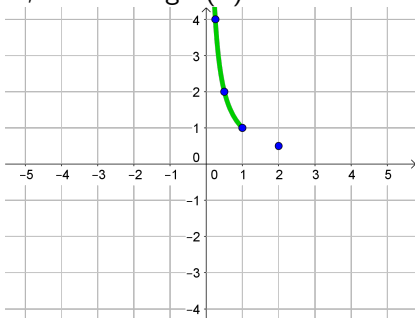
$$\text{If } x = 1 \rightarrow f(1) = \frac{1}{1} = 1 \rightarrow (1, 1)$$

$$\text{If } x = 2 \rightarrow f(2) = \frac{1}{2} = \frac{1}{2} \rightarrow \left(2, \frac{1}{2}\right)$$

$$\text{If } x = \frac{1}{2} \rightarrow f\left(\frac{1}{2}\right) = \frac{1}{\frac{1}{2}} = 2 \rightarrow \left(\frac{1}{2}, 2\right)$$

$$\text{If } x = \frac{1}{4} \rightarrow f\left(\frac{1}{4}\right) = \frac{1}{\frac{1}{4}} = 4 \rightarrow \left(\frac{1}{4}, 4\right)$$

$$\text{If } x \rightarrow 0 \text{ then } f(x) = \frac{1}{x} \text{ gets bigger}$$



Graphing Rational Functions - $f(x) = \frac{1}{x}$

▶ We defined a Rational Function as:

$$f(x) = \frac{P(x)}{D(x)}$$

We saw that these functions are undefined for x so $D(x) = 0$

Now we will graph our easiest Rational Function:

$$f(x) = \frac{1}{x}$$

To see the whole graph, let's start with some points.

We can find points by picking x -values, and finding $f(x)$

If $x = 1 \rightarrow f(1) = \frac{1}{1} = 1 \rightarrow (1, 1)$

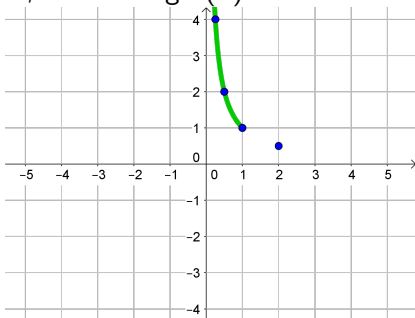
If $x = 2 \rightarrow f(2) = \frac{1}{2} = \frac{1}{2} \rightarrow (2, \frac{1}{2})$

If $x = \frac{1}{2} \rightarrow f(\frac{1}{2}) = \frac{1}{\frac{1}{2}} = 2 \rightarrow (\frac{1}{2}, 2)$

If $x = \frac{1}{4} \rightarrow f(\frac{1}{4}) = \frac{1}{\frac{1}{4}} = 4 \rightarrow (\frac{1}{4}, 4)$

If $x \rightarrow 0$ then $f(x) = \frac{1}{x}$ gets bigger

If $x \rightarrow \infty$ then $f(x) = \frac{1}{x}$ gets smaller



Graphing Rational Functions - $f(x) = \frac{1}{x}$

► We defined a Rational Function as:

$$f(x) = \frac{P(x)}{D(x)}$$

We saw that these functions are undefined for x so $D(x) = 0$

Now we will graph our easiest Rational Function:

$$f(x) = \frac{1}{x}$$

To see the whole graph, let's start with some points.

We can find points by picking x -values, and finding $f(x)$

$$\text{If } x = 1 \rightarrow f(1) = \frac{1}{1} = 1 \rightarrow (1, 1)$$

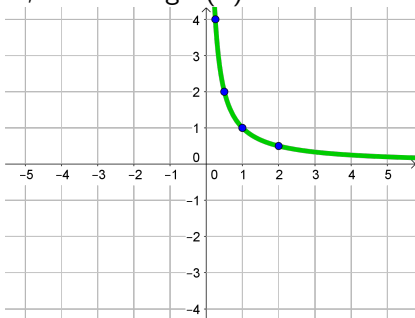
$$\text{If } x = 2 \rightarrow f(2) = \frac{1}{2} = \frac{1}{2} \rightarrow \left(2, \frac{1}{2}\right)$$

$$\text{If } x = \frac{1}{2} \rightarrow f\left(\frac{1}{2}\right) = \frac{1}{\frac{1}{2}} = 2 \rightarrow \left(\frac{1}{2}, 2\right)$$

$$\text{If } x = \frac{1}{4} \rightarrow f\left(\frac{1}{4}\right) = \frac{1}{\frac{1}{4}} = 4 \rightarrow \left(\frac{1}{4}, 4\right)$$

If $x \rightarrow 0$ then $f(x) = \frac{1}{x}$ gets bigger

If $x \rightarrow \infty$ then $f(x) = \frac{1}{x}$ gets smaller



Graphing Rational Functions - $f(x) = \frac{1}{x}$

► We defined a Rational Function as:

$$f(x) = \frac{P(x)}{D(x)}$$

We saw that these functions are undefined for x so $D(x) = 0$

Now we will graph our easiest Rational Function:

$$f(x) = \frac{1}{x}$$

To see the whole graph, let's start with some points.

We can find points by picking x -values, and finding $f(x)$

$$\text{If } x = 1 \rightarrow f(1) = \frac{1}{1} = 1 \rightarrow (1, 1)$$

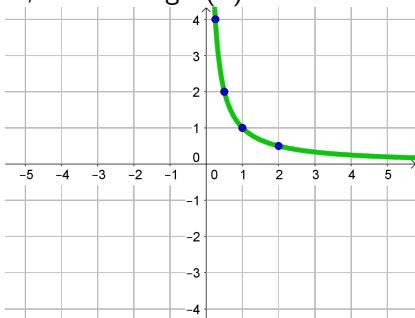
$$\text{If } x = 2 \rightarrow f(2) = \frac{1}{2} = \frac{1}{2} \rightarrow \left(2, \frac{1}{2}\right)$$

$$\text{If } x = \frac{1}{2} \rightarrow f\left(\frac{1}{2}\right) = \frac{1}{\frac{1}{2}} = 2 \rightarrow \left(\frac{1}{2}, 2\right)$$

$$\text{If } x = \frac{1}{4} \rightarrow f\left(\frac{1}{4}\right) = \frac{1}{\frac{1}{4}} = 4 \rightarrow \left(\frac{1}{4}, 4\right)$$

If $x \rightarrow 0$ then $f(x) = \frac{1}{x}$ gets bigger

If $x \rightarrow \infty$ then $f(x) = \frac{1}{x}$ gets smaller



For $x < 0$ we get a similar picture, but with $f(x) = \frac{1}{x} < 0$ as well

Graphing Rational Functions - $f(x) = \frac{1}{x}$

► We defined a Rational Function as:

$$f(x) = \frac{P(x)}{D(x)}$$

We saw that these functions are undefined for x so $D(x) = 0$

Now we will graph our easiest Rational Function:

$$f(x) = \frac{1}{x}$$

To see the whole graph, let's start with some points.

We can find points by picking x -values, and finding $f(x)$

$$\text{If } x = 1 \rightarrow f(1) = \frac{1}{1} = 1 \rightarrow (1, 1)$$

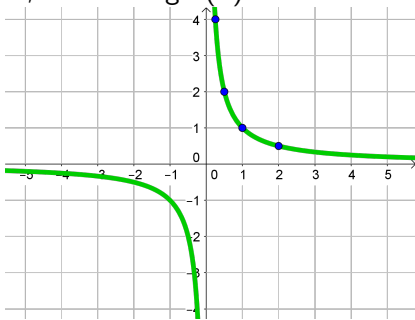
$$\text{If } x = 2 \rightarrow f(2) = \frac{1}{2} = \frac{1}{2} \rightarrow \left(2, \frac{1}{2}\right)$$

$$\text{If } x = \frac{1}{2} \rightarrow f\left(\frac{1}{2}\right) = \frac{1}{\frac{1}{2}} = 2 \rightarrow \left(\frac{1}{2}, 2\right)$$

$$\text{If } x = \frac{1}{4} \rightarrow f\left(\frac{1}{4}\right) = \frac{1}{\frac{1}{4}} = 4 \rightarrow \left(\frac{1}{4}, 4\right)$$

If $x \rightarrow 0$ then $f(x) = \frac{1}{x}$ gets bigger

If $x \rightarrow \infty$ then $f(x) = \frac{1}{x}$ gets smaller



For $x < 0$ we get a similar picture, but with $f(x) = \frac{1}{x} < 0$ as well