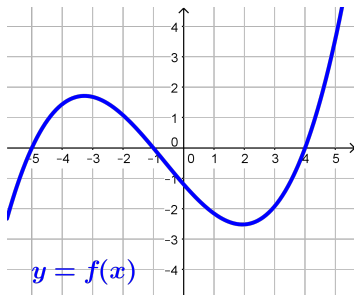


Vertical Shifts of Graphs

Vertical Shifts of Graphs

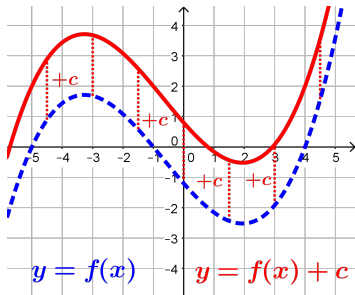
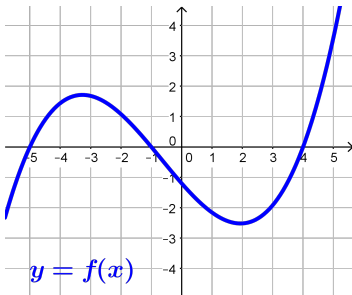
In general, for any function $y = f(x)$



Vertical Shifts of Graphs

In general, for any function $y = f(x)$

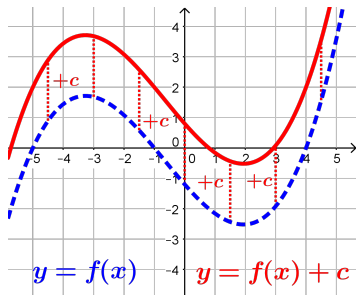
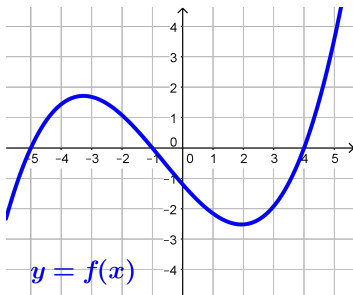
The graph of $y = f(x) + c$ is the graph of $y = f(x)$ shifted in the vertical direction by c



Vertical Shifts of Graphs

In general, for any function $y = f(x)$

The graph of $y = f(x) + c$ is the graph of $y = f(x)$ shifted in the vertical direction by c



Note: If $c > 0$ then the graph moves up and
if $c < 0$ then the graph moves down