

What about negative dilation?

What about negative dilation?

► We saw that the graph of $y = a \cdot f(x)$ is the graph of $y = f(x)$ dilated (stretched or shrunk) vertically by $a > 0$

What about negative dilation?

► We saw that the graph of $y = a \cdot f(x)$ is the graph of $y = f(x)$ dilated (stretched or shrunk) vertically by $a > 0$

This is because we were multiplying by a to the formula for y

What about negative dilation?

► We saw that the graph of $y = a \cdot f(x)$ is the graph of $y = f(x)$ dilated (stretched or shrunk) vertically by $a > 0$. This is because we were multiplying by a to the formula for y . What if instead we multiply by -1 ?

What about negative dilation?

► We saw that the graph of $y = a \cdot f(x)$ is the graph of $y = f(x)$ dilated (stretched or shrunk) vertically by $a > 0$

This is because we were multiplying by a to the formula for y
What if instead we multiply by -1 ?

Example: Find the graph of

$$y = -1 \cdot x^2$$

What about negative dilation?

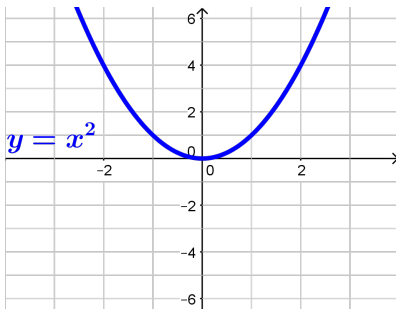
► We saw that the graph of $y = a \cdot f(x)$ is the graph of $y = f(x)$ dilated (stretched or shrunk) vertically by $a > 0$

This is because we were multiplying by a to the formula for y
What if instead we multiply by -1 ?

Example: Find the graph of

$$y = -1 \cdot x^2$$

We will start with the basic graph: $y = x^2$



What about negative dilation?

► We saw that the graph of $y = a \cdot f(x)$ is the graph of $y = f(x)$ dilated (stretched or shrunk) vertically by $a > 0$

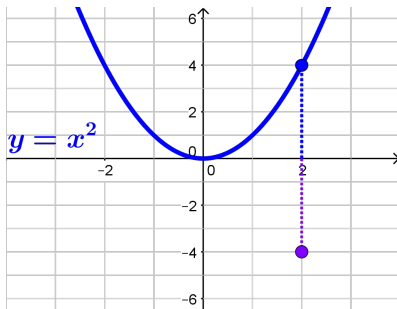
This is because we were multiplying by a to the formula for y
What if instead we multiply by -1 ?

Example: Find the graph of

$$y = -1 \cdot x^2$$

We will start with the basic graph: $y = x^2$

At each point, the y value changes sign



What about negative dilation?

► We saw that the graph of $y = a \cdot f(x)$ is the graph of $y = f(x)$ dilated (stretched or shrunk) vertically by $a > 0$

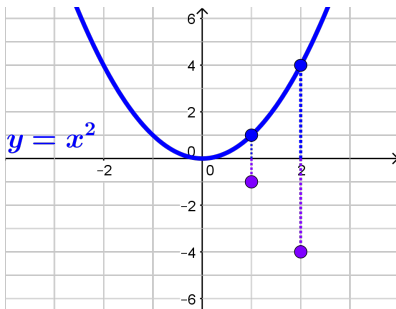
This is because we were multiplying by a to the formula for y
What if instead we multiply by -1 ?

Example: Find the graph of

$$y = -1 \cdot x^2$$

We will start with the basic graph: $y = x^2$

At each point, the y value changes sign



What about negative dilation?

► We saw that the graph of $y = a \cdot f(x)$ is the graph of $y = f(x)$ dilated (stretched or shrunk) vertically by $a > 0$

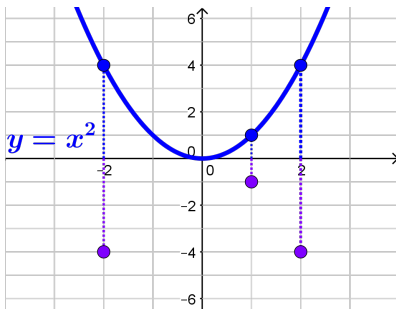
This is because we were multiplying by a to the formula for y
What if instead we multiply by -1 ?

Example: Find the graph of

$$y = -1 \cdot x^2$$

We will start with the basic graph: $y = x^2$

At each point, the y value changes sign



What about negative dilation?

► We saw that the graph of $y = a \cdot f(x)$ is the graph of $y = f(x)$ dilated (stretched or shrunk) vertically by $a > 0$

This is because we were multiplying by a to the formula for y
What if instead we multiply by -1 ?

Example: Find the graph of

$$y = -1 \cdot x^2$$

We will start with the basic graph: $y = x^2$

At each point, the y value changes sign

Changing the sign of y at every point, gives the graph of $y = -1 \cdot x^2$

