

Graphing Solutions to:  $y = |4x + 2|$

## Graphing Solutions to: $y = |4x + 2|$

We will see how absolute values effect graphs of lines

## Graphing Solutions to: $y = |4x + 2|$

We will see how absolute values effect graphs of lines  
Before we bring in the absolute values, let's graph:

## Graphing Solutions to: $y = |4x + 2|$

We will see how absolute values effect graphs of lines  
Before we bring in the absolute values, let's graph:

**Example:** Graph the solutions to:

$$y = 4x + 2$$

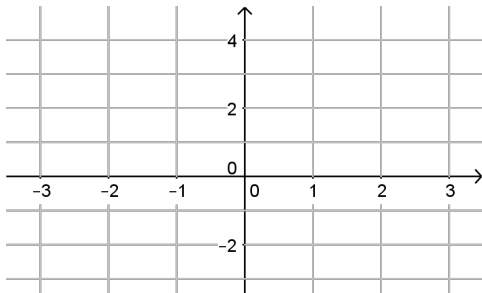
## Graphing Solutions to: $y = |4x + 2|$

We will see how absolute values effect graphs of lines  
Before we bring in the absolute values, let's graph:

**Example:** Graph the solutions to:

$$y = 4x + 2$$

To sketch the graph, we need to find the



## Graphing Solutions to: $y = |4x + 2|$

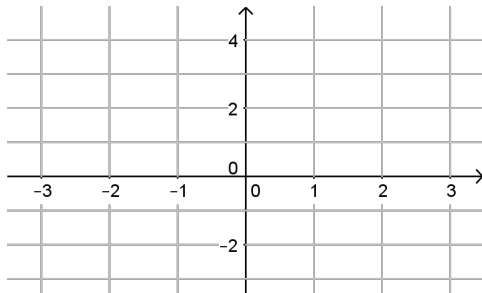
We will see how absolute values effect graphs of lines  
Before we bring in the absolute values, let's graph:

**Example:** Graph the solutions to:

$$y = 4x + 2$$

To sketch the graph, we need to find the

$y$ -int:  $x = 0$



## Graphing Solutions to: $y = |4x + 2|$

We will see how absolute values effect graphs of lines  
Before we bring in the absolute values, let's graph:

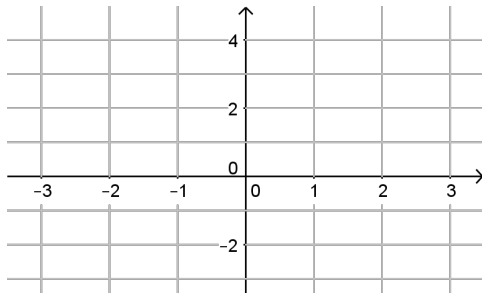
**Example:** Graph the solutions to:

$$y = 4x + 2$$

To sketch the graph, we need to find the

$y$ -int:  $x = 0$

$$y = 4 \cdot 0 + 2$$



## Graphing Solutions to: $y = |4x + 2|$

We will see how absolute values effect graphs of lines  
Before we bring in the absolute values, let's graph:

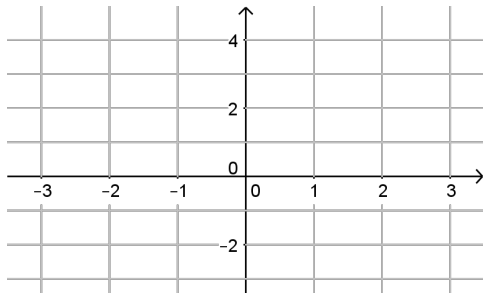
**Example:** Graph the solutions to:

$$y = 4x + 2$$

To sketch the graph, we need to find the

$y$ -int:  $x = 0$

$$y = 4 \cdot 0 + 2 = 2$$





## Graphing Solutions to: $y = |4x + 2|$

We will see how absolute values effect graphs of lines  
Before we bring in the absolute values, let's graph:

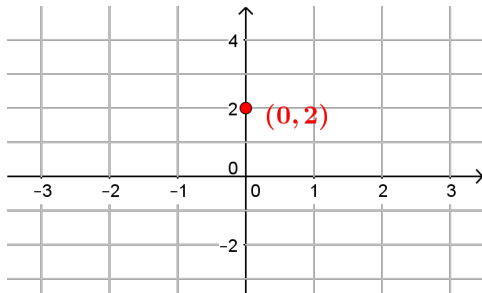
**Example:** Graph the solutions to:

$$y = 4x + 2$$

To sketch the graph, we need to find the

$y$ -int:  $x = 0$

$$y = 4 \cdot 0 + 2 = 2 \rightarrow (0, 2)$$



## Graphing Solutions to: $y = |4x + 2|$

We will see how absolute values effect graphs of lines  
Before we bring in the absolute values, let's graph:

**Example:** Graph the solutions to:

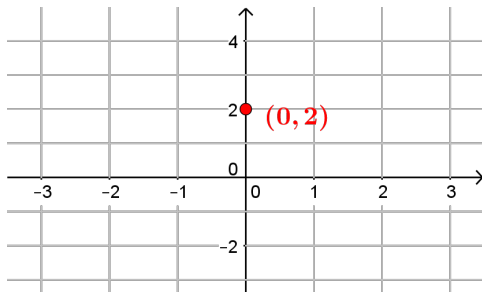
$$y = 4x + 2$$

To sketch the graph, we need to find the

$y$ -int:  $x = 0$

$$y = 4 \cdot 0 + 2 = 2 \rightarrow (0, 2)$$

$x$ -int:  $y = 0$



## Graphing Solutions to: $y = |4x + 2|$

We will see how absolute values effect graphs of lines  
Before we bring in the absolute values, let's graph:

**Example:** Graph the solutions to:

$$y = 4x + 2$$

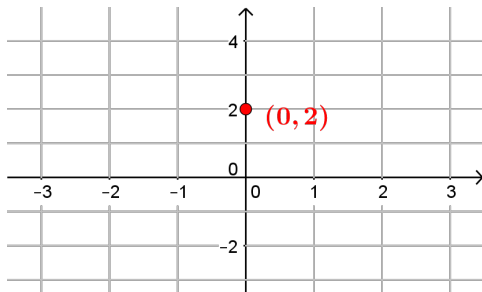
To sketch the graph, we need to find the

$y$ -int:  $x = 0$

$$y = 4 \cdot 0 + 2 = 2 \rightarrow (0, 2)$$

$x$ -int:  $y = 0$

$$0 = 4 \cdot x + 2$$



## Graphing Solutions to: $y = |4x + 2|$

We will see how absolute values effect graphs of lines  
Before we bring in the absolute values, let's graph:

**Example:** Graph the solutions to:

$$y = 4x + 2$$

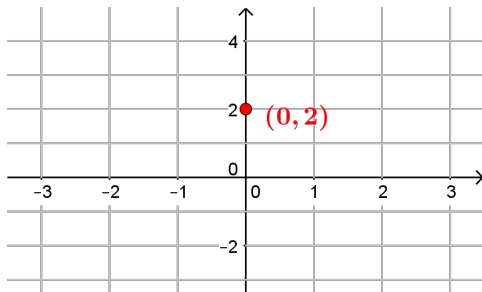
To sketch the graph, we need to find the

$y$ -int:  $x = 0$

$$y = 4 \cdot 0 + 2 = 2 \rightarrow (0, 2)$$

$x$ -int:  $y = 0$

$$0 = 4 \cdot x + 2 \Leftrightarrow -2 = 4x$$



## Graphing Solutions to: $y = |4x + 2|$

We will see how absolute values effect graphs of lines  
Before we bring in the absolute values, let's graph:

**Example:** Graph the solutions to:

$$y = 4x + 2$$

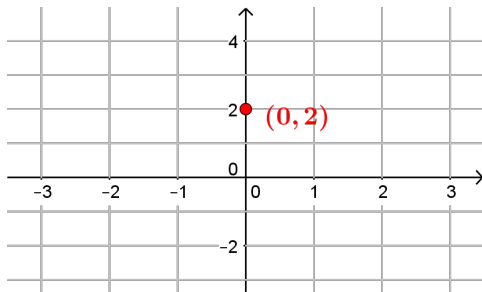
To sketch the graph, we need to find the

$y$ -int:  $x = 0$

$$y = 4 \cdot 0 + 2 = 2 \rightarrow (0, 2)$$

$x$ -int:  $y = 0$

$$0 = 4 \cdot x + 2 \Leftrightarrow -2 = 4x \Leftrightarrow x = -\frac{1}{2}$$



## Graphing Solutions to: $y = |4x + 2|$

We will see how absolute values effect graphs of lines  
Before we bring in the absolute values, let's graph:

**Example:** Graph the solutions to:

$$y = 4x + 2$$

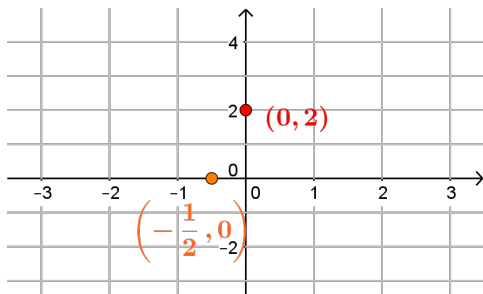
To sketch the graph, we need to find the

**y-int:**  $x = 0$

$$y = 4 \cdot 0 + 2 = 2 \rightarrow (0, 2)$$

**x-int:**  $y = 0$

$$0 = 4 \cdot x + 2 \Leftrightarrow -2 = 4x \Leftrightarrow x = -\frac{1}{2} \rightarrow \left(-\frac{1}{2}, 0\right)$$



## Graphing Solutions to: $y = |4x + 2|$

We will see how absolute values effect graphs of lines  
Before we bring in the absolute values, let's graph:

**Example:** Graph the solutions to:

$$y = 4x + 2$$

To sketch the graph, we need to find the

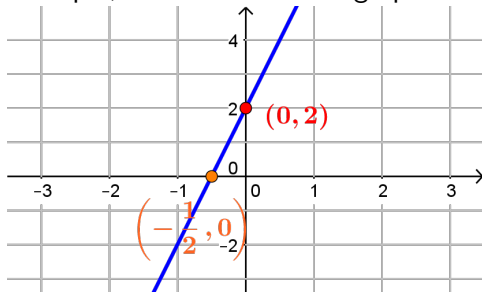
**y-int:**  $x = 0$

$$y = 4 \cdot 0 + 2 = 2 \rightarrow (0, 2)$$

**x-int:**  $y = 0$

$$0 = 4 \cdot x + 2 \Leftrightarrow -2 = 4x \Leftrightarrow x = -\frac{1}{2} \rightarrow \left(-\frac{1}{2}, 0\right)$$

Using the intercepts, we can sketch the graph of the line



## Graphing Solutions to: $y = |4x + 2|$

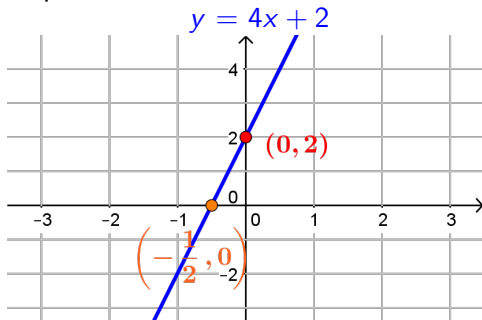
**Example:** Graph the solutions to:

$$y = 4x + 2$$



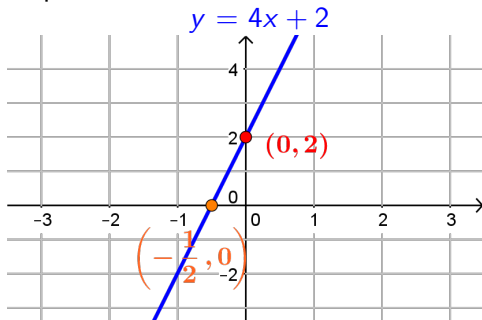
# Graphing Solutions to: $y = |4x + 2|$

**Example:** Graph the solutions to:



# Graphing Solutions to: $y = |4x + 2|$

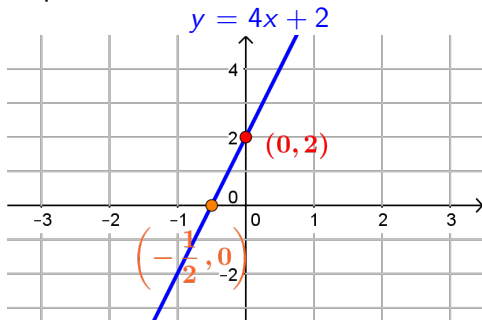
**Example:** Graph the solutions to:



How does the graph of  $y = 4x + 2$  help us graph:  
 $y = |4x + 2|$

## Graphing Solutions to: $y = |4x + 2|$

**Example:** Graph the solutions to:



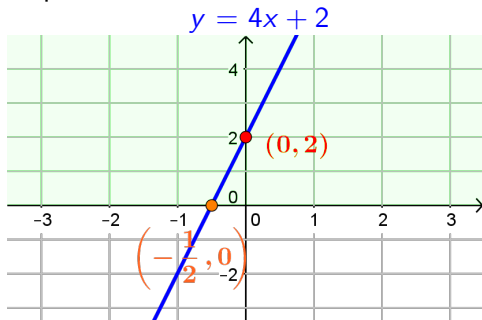
How does the graph of  $y = 4x + 2$  help us graph:

$$y = |4x + 2|$$

For  $y = |4x + 2|$  all of the  $y$ -values must be positive.

## Graphing Solutions to: $y = |4x + 2|$

**Example:** Graph the solutions to:



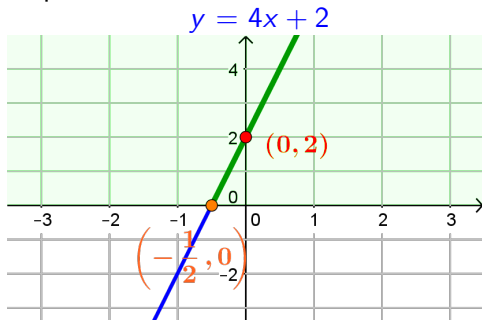
How does the graph of  $y = 4x + 2$  help us graph:

$$y = |4x + 2|$$

For  $y = |4x + 2|$  all of the  $y$ -values must be positive. Remember, the part of the graph where  $y$ -values are positive is everything above the  $x$ -axis

## Graphing Solutions to: $y = |4x + 2|$

**Example:** Graph the solutions to:



How does the graph of  $y = 4x + 2$  help us graph:

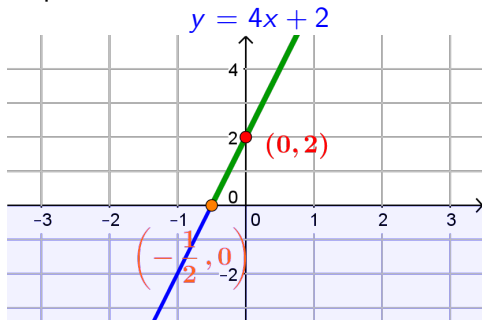
$$y = |4x + 2|$$

For  $y = |4x + 2|$  all of the  $y$ -values must be positive. Remember, the part of the graph where  $y$ -values are positive is everything above the  $x$ -axis

Where the graph already has positive  $y$ -values is unchanged

## Graphing Solutions to: $y = |4x + 2|$

**Example:** Graph the solutions to:



How does the graph of  $y = 4x + 2$  help us graph:

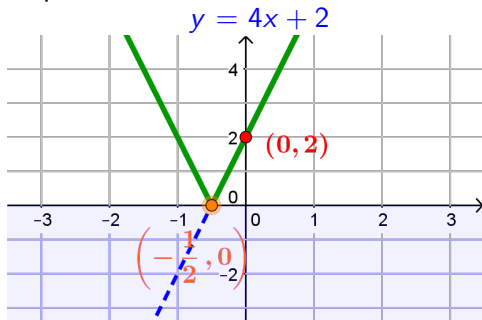
$$y = |4x + 2|$$

For  $y = |4x + 2|$  all of the  $y$ -values must be positive. Remember, the part of the graph where  $y$ -values are positive is everything above the  $x$ -axis

Where the graph already has positive  $y$ -values is unchanged  
But anything below the  $x$ -axis is where  $y < 0$

## Graphing Solutions to: $y = |4x + 2|$

**Example:** Graph the solutions to:



How does the graph of  $y = 4x + 2$  help us graph:

$$y = |4x + 2|$$

For  $y = |4x + 2|$  all of the  $y$ -values must be positive. Remember, the part of the graph where  $y$ -values are positive is everything above the  $x$ -axis

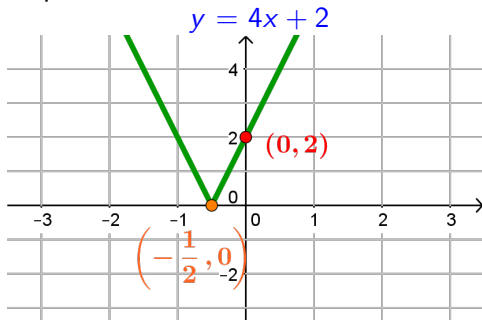
Where the graph already has positive  $y$ -values is unchanged

But anything below the  $x$ -axis is where  $y < 0$

Taking the absolute value will make this positive

## Graphing Solutions to: $y = |4x + 2|$

**Example:** Graph the solutions to:



How does the graph of  $y = 4x + 2$  help us graph:

$$y = |4x + 2|$$

For  $y = |4x + 2|$  all of the  $y$ -values must be positive.

Remember, the part of the graph where  $y$ -values are positive is everything above the  $x$ -axis

Where the graph already has positive  $y$ -values is unchanged

But anything below the  $x$ -axis is where  $y < 0$

Taking the absolute value will make this positive

These are the solutions to:  $y = |4x + 2|$